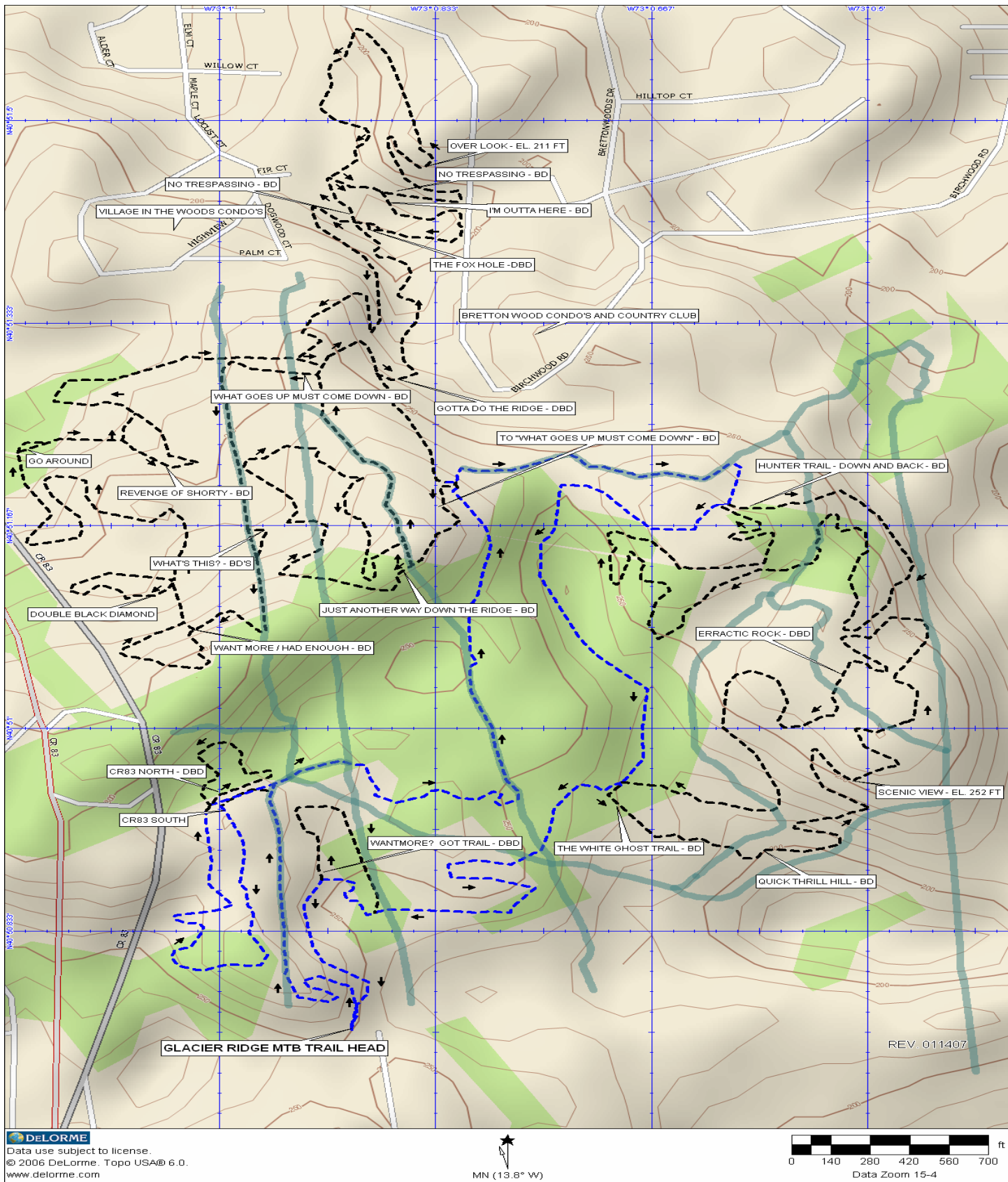


TOWN OF BROOKHAVEN - GLACIER RIDGE MOUNTAIN BIKE TRAIL



DeLORME
 Data use subject to license.
 © 2006 DeLorme. Topo USA® 6.0.
 www.delorme.com

★
 MN (13.8° W)

0 140 280 420 560 700 ft
 Data Zoom 15-4

TRAIL IS ONE WAY
 BLUE TRAIL IS INTERMEDIATE - DISTANCE - 2.70
 TOTAL TRAIL DISTANCE - 10.50 MILES
 BLACK TRAILS ARE MORE DIFFICULT AND ARE OPTIONAL
 BD = BLACK DIAMOND - DIFFICULT
 DBD = DOUBLE BLACK DIAMOND - MORE DIFFICULT
 LIGHT GRAY LINES ARE BAIL OUTS/FIREROADS - FOLLOW
 SIGNS TO GET BACK TO THE PARKING LOT

HELMETS AND EYE PROTECTION ARE REQUIRED
 MOUNTAIN BIKING IS AN INHERENTLY RISKY ACTIVITY.
 USE TRAILS AT YOUR OWN RISK. RIDE IN CONTROL
 AND WITHIN YOUR ABILITY AT ALL TIMES. BE RESPONSIBLE
 WHEN TRAILS ARE MUDDY. GIVE THE TRAILS A DAY TO
 DRY UP AFTER A RAIN.
FOR ALL EMERGENCIES - CALL 911